

Fall  
2011

# Alpine Ranch Gazette

Alpine Ranch Association PO Box 3199 Cleveland, GA 30528



## INSIDE THIS ISSUE:

<b>Annual Meeting Recap</b>	<b>1</b>
<b>Win a free week</b>	<b>1</b>
<b>Featuring: Mr. Craig Overstreet</b>	<b>2</b>
<b>Guest Services</b>	<b>2</b>
<b>Resort Ratings</b>	<b>3</b>



### Alpine Ranch Association Officers

Jack Ballard - President  
Bill Walters - Vice President  
Jean B. Lockhart - Treasurer  
Pat Dennis - Secretary  
Georgia Brown - Asst. Secretary  
Members of the Board of Directors  
Monte Cater  
Brian Dennis  
Rick Hawkins  
Marty Jones  
Craig and Loreen Overstreet

## ONLINE NEWSLETTER

You are receiving an electronic version of the newsletter because we have a valid email address for you. Also, this helps in reducing printing and postal expenses.

You will also need Adobe Reader to access the newsletter (available as a free download from this Adobe link). <http://get.adobe.com/reader/>

## Past Year At A Glance

The Annual Meeting was held at Mountain Lakes Club House on Saturday, May 7, 2011. Board members will remain the same for another 3 year term.

Thanks to all who stepped up and paid their special assessment. It truly helped us to survive a trying financial time. We were frugal with your money and only made repairs that were a strict necessity.

Your Board of Directors made the following recommendations to keep cost down: If a member splits their exclusive week they will be charged a \$35 cleaning fee for the second visit. *Secondly, that owners who pay their maintenance fee by Dec. 1st, 2011, will be entered in a drawing for a free week. Two winners will be chosen.* BOD members are not eligible for the drawing. And finally, maintenance fees for 2012 will remain as 2011, with no increase.

Lynn, Denise, and Freddie, a **resounding thanks** to you, and to Country Hideaway for all your assistance this past year! You are doing an excellent job keeping our ratings up with RCI. We appreciate your solid, ongoing, and dedicated expertise.



# Featuring: William "Craig" Overstreet



Craig and Lori Overstreet

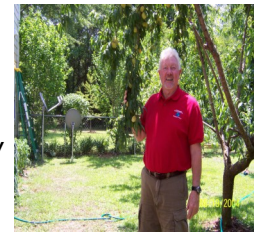
Craig and Lori Overstreet have been owners at Alpine Ranch for 14 years after accidentally buying a membership. Falling in love with those 12 beautiful chalets was easy and well worth the 7 hour drive from DeFuniak Springs, FL where the Overstreet's reside. Craig was honored to be elected to the Alpine Ranch Board of Directors in 2005 and has worked hard to improve the resort. He was born in Waynesboro, MS. He earned his B.S. from Southern Mississippi and his Masters Degree from the University of West Florida. He moved to Florida in 1974 and has seen some fantastic changes.

Craig retired on January 1<sup>st</sup> of this year after a busy career that included 16 years of teaching and coaching high school in Ft. Walton Beach and Niceville Florida. He was selected Star Teacher in 1973. Teams he coached won the state Tennis Tournament five

times. Using his advanced science degrees, Craig then went to work as an environmental scientist with the US Air Force. With the completion of 20 years of service and being the Environmental Flight Chief at Hurlburt Field, Craig decided to retire. In those 20 years Craig became an expert on asbestos and lead and their related health effects, storm water management, waste water management, hazardous materials management, and recycling. He won numerous awards during his Civil Service career and in 2008 was honored with the Air Force award for Recycling when he managed the base recycled effort that recycled over 4 million pounds of materials earning \$970,000.00 for the base. During this time Craig also managed to complete a 35 year career in the Air Force Reserves retiring from Tyndall Air Force Base, Florida as Chief of Services. Craig is very proud of this service and of being a Veteran. During his career(s) he was fortunate to be assigned to Germany for two tours (five years) and he speaks fluent German. He really misses the German food.

Soon after retirement, Craig completed the Florida Master Gardener and Landscape

Architect class and is certified by the state to serve as an advisor to the Walton County Agricultural Extension Service. He works one day a week advising farmers and gardeners on how to properly manage trees, lawns and gardens. He is also on the Cogongrass Control Committee and is working with the Walton County Health Department to develop a state assessment on Environmental Health. Using his knowledge of biology, Craig's hobbies naturally include a large herb and vegetable garden, fruit and nut trees, and chickens for eggs only. His policy is to be strictly organic if possible and most of his produce has never been treated with pesticides or chemical fertilizers. He and wife, Lori, have 4 dogs (3 are rescues) and five cats (all rescues). "We love our animals but they sure do make it hard to travel", said Craig. He also stated that he mistakenly thought that retirement was going to be easy – NOT!



"This above all, to thine own self be true." William Shakespear

## HEADS UP FROM MOUNTAIN LAKES CLUB

If an owner is expecting a guest to join them on the premises, the owner must meet the guest at the security gate.

Your Mountain Lakes Club laminated card must have the current year sticker on it. If you do not have the current year sticker, please contact Rhonda or Kathy before you plan your Alpine Ranch get-away. Call them at 706.865.4742 right away. Thanks.

## Happy Trails To You:

During the winter season, trail rides are available on Friday, Saturday, and Sunday if weather permits. Be sure to check the website @ [www.mountainlakesresort.us](http://www.mountainlakesresort.us) or call Mountain Lakes at 706-865-4742 for more information on winter hours of operation and daily activities.



Trail Ride Prices For 2012	
Who	Cost
Laminate Card Holders	\$10.00
Guest Pass Holders	\$20.00
Season Pass Holders	\$15.00
Outside Rentals	\$30.00

## Owner Guest Services:

Owner's guest are required to purchase **daily** guest passes for club amenities **prior** to arrival at the resort. Contact Rhonda or Virginia at the Mountain Lakes Club office (706-865-4742) or email ([rrhodesmlc@windstream.net](mailto:rrhodesmlc@windstream.net)) to purchase **daily** amenities passes. Please be mindful that the cost of trail rides **is not** included in the purchase price of a **daily** guest pass.

Price of Guest Pass		
Who	Age	Cost
Adult	16 years and older	\$5.00
Children	6-15 years old	\$3.00
Children	5 years and under	Free

## SAVE THE DATE:

Remember that the following Alpine Ranch Association meetings will be held at Mountain Lakes Resort. For additional information, please contact Lynn or Denise at 706- 865-7666.

Don't Forget

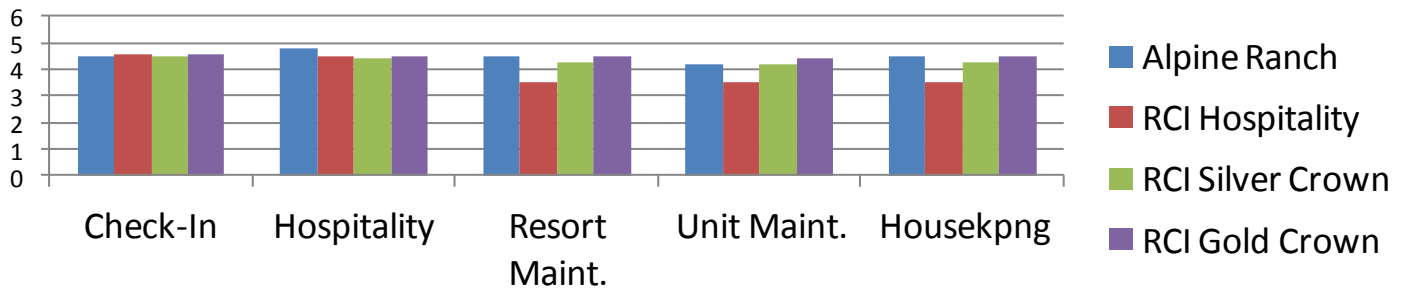
Date	Title
May 5, 2012	AR Annual Meeting

On Sunday, Nov 6, 2011 at 2 a.m., Daylight Saving ends.

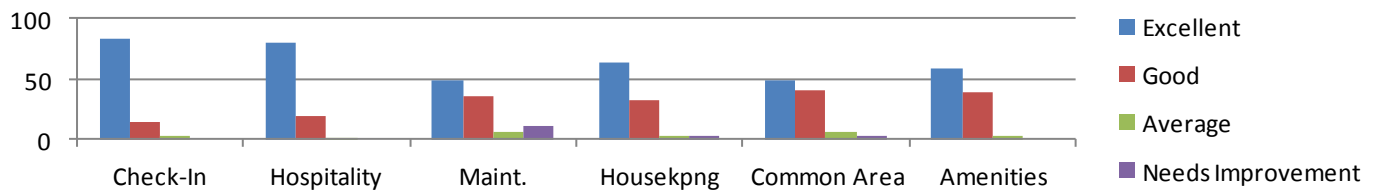




## RCI Resort Ratings 2010



## Resort Ratings 2010



### 2012 Maintenance Fee

The maintenance fee has been assessed at \$385 and is due January 1, 2012. The 2012 assessments were mailed in mid September 2011. The mailing included 2012 Maintenance Billing and Exclusive Week usage selection card. Please check your US Postal mail box for this important mailing. **Don't miss out: Pay by December 1st, 2011 to be entered into the drawing for a free week at Alpine Ranch!!!**

### Website

Check us out at:  
<http://www.alpineranchga.com>  
 Tell your relatives, friends, and neighbors.

## 41th Annual Oktoberfest 2011

<b>Dates:</b>	Sept 22 - Oct 30 (Each day)
<b>Time:</b>	Monday-Thursday: 6PM – 10:30PM Friday: 6PM – Midnight Saturday: 1PM – Midnight Sunday: 1PM – 7:00PM
<b>Place:</b>	<b>Helen Festhalle</b> <b>1074 Edelweiss Strasse</b> <b>Helen, GA 30545-3646</b>
<b>Admission:</b>	<b>Weekdays: \$7.00</b> <b>Saturdays: \$9.00</b> <b>Sundays: \$Free</b> <b>Food and drink are extra.</b>



[www.helenchamber.com](http://www.helenchamber.com)

The town of Helen, Georgia, is a resort town themed closely upon life in a German village. This northern mountain town hosts a two (2) month Oktoberfest that draws thousands from all around the world each year. The authentic touches of Helen and its more than 30 years of hosting Oktoberfest, make it a great destination for many. Come and create your own memories. Contact Alpine Helen Chamber of Commerce at 706-878-1908 or email [office@helenchamber.com](mailto:office@helenchamber.com). You may also contact the Helen/White County Convention & Visitors Bureau at 1.800.858.8027 or click the web address at [www.helenga.org](http://www.helenga.org)

**Alpine Ranch Association, Inc.**

PO Box 3199

Cleveland, GA 30528

Address Services Requested

**Newsletter Publishing Team**  
 \*\*\*\*\*  
**Georgia Brown**  
**Bill Walters**  
 \*\*\*\*\*

Be sure to bring your laminated card with current year's sticker. Mountain Lakes Club charges \$20 to replace the card. It is required to enter the grounds. Call 706-865-4742 with questions or concerns.



Alpine Ranch Association

PO Box 3199

Cleveland, GA 30528

**FALL  
2011**

*Dream BIG....*

Email:  
 chcainc@windstream.net  
 Phone: 1-800-514-1618  
 Fax: 706-865-1418

**DRIVING DIRECTIONS TO ALPINE RANCH/MOUNTAIN LAKES RESORT**

**FROM I-85 NORTH ATLANTA, GA**

Take I-85 North to 985 to  
 Exit 24 at end of exit ramp turn left and go to the third traffic light  
 Turn right at traffic light onto Limestone Pkwy  
 At the end of Limestone Pkwy turn right onto Hwy 129 North  
 Continue on Hwy 129 N to Cleveland (approx 23 mi)  
 In Cleveland continue north on Hwy 129 for 3.1 miles  
 Turn right onto Hwy 75 Alt  
 Continue 2.5 miles on 75 A to Mountain Lakes Resort on left

**FROM 400 ATLANTA, GA**

Drive north on GA 400 to the end (approx 49 mi from I-285)  
 At the traffic light at the end of 400 continue straight ahead on Longbranch Rd (4.5 miles)  
 At first traffic light turn right on 52 & 115 to Cleveland  
 At first traffic light in Cleveland turn left onto 129 North  
 Continue north on 129 for 3.1 miles  
 Turn right onto Hwy 75 Alternate  
 Continue 2.5 miles on 75 A to Mountain Lakes Resort on left

**FROM GREENVILLE, SC**

Take I-85 South to Hwy 17 (Lavonia/Toccoa Exit #173)  
 Turn left at end of exit ramp toward Toccoa onto Hwy 17  
 Travel approx 12 miles. Turn left which is still Hwy 17, which will turn into Hwy 365.  
 Approx 11 miles turn right at first Exit to Clarkesville/Helen  
 Continue on Hwy 17 (Historic 441 to downtown Clarkesville)  
 At the traffic light in the center of Clarkesville turn left onto Hwy 115 West to Cleveland  
 At first traffic light in Cleveland turn right onto 129 North and continue north for 3.1 miles  
 Turn right onto Hwy 75 Alt  
 Continue 2.5 miles on 75 A to Mountain Lakes Resort on left

**FROM DAHLONEGA, GA**

Take Hwy 52 & Hwy 115 West to Cleveland, GA  
 At first traffic light in Cleveland turn left onto 129 North and continue north for 3.1 miles  
 Turn right onto 75 Alt - Continue 2.5 miles to Mtn Lakes Resort on left